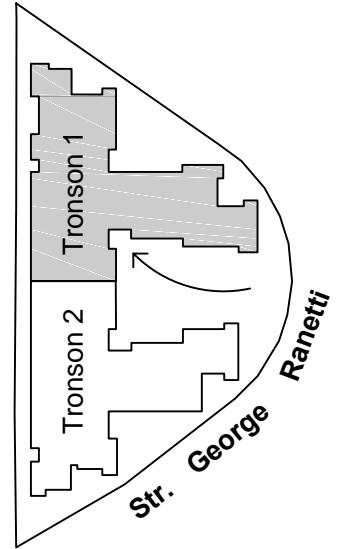
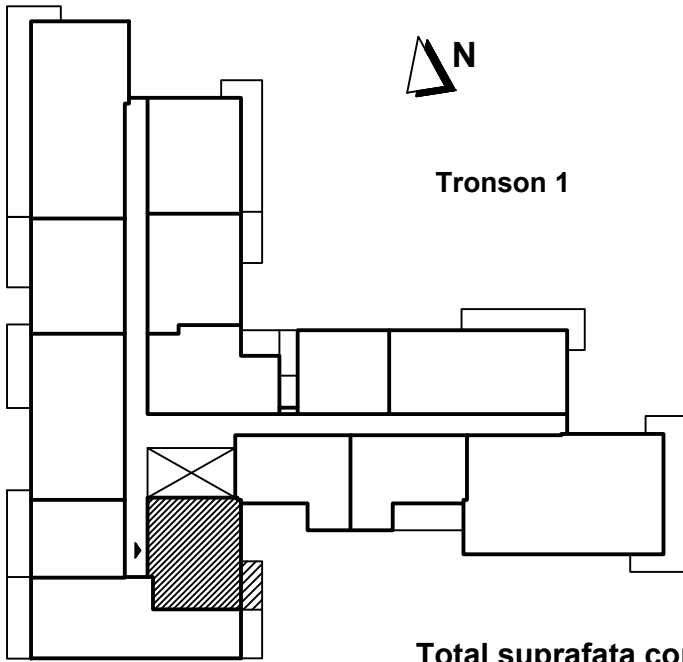


# Apartament 2 camere - 1301 / 1501, etaj 3 / 5, tronson 1 Str. George Ranetti, Nr. 2-8, Sector 6



Total suprafata construita apartament = 56.00 mp, din care:  
 - suprafata construita balcon = 5.10 mp  
 Total suprafata utila apartament = 46.40 mp

AP. 1301 / 1501

